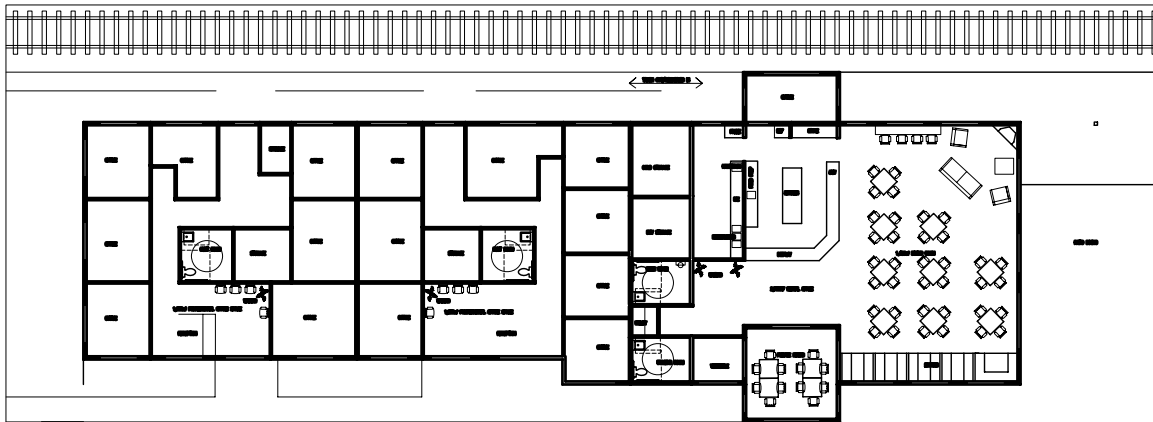


COMMERCIAL BROOKPARK STATION - EAST

LEWISBURG, PENNSYLVANIA



PROJECT DATE: 2007
PROJECT DESCRIPTION: NEW CONSTRUCTION ALONG HEAVILY TRAVELED ROUTE 45 AT THE ENTRANCE TO BROOKPARK FARMS COMMERCIAL AND RESIDENTIAL DEVELOPMENT. THE SITE IS EXTREMELY LONG AND NARROW AND BORDERED BY AN ACTIVE RAIL LINE TO THE REAR. THE DEVELOPER WISHED TO HAVE THE BUILDING PICK UP ON THE TRADITIONS OF A RAILWAY STATION. THE PROJECT WAS SPLIT INTO TWO SEPERATE BUILDINGS, ONE BEING THE PASSENGER STATION THE OTHER MORE AKIN TO A TRADITIONAL FREIGHT STATION.



ROBERT A. LACK, AIA
Architecture & Design, Inc.
230 Market Street, Lewisburg, PA 17837
Tele: 570-524-2300 Fax: 570-523-6140
www.ralad.com email: ralad@ralad.com