

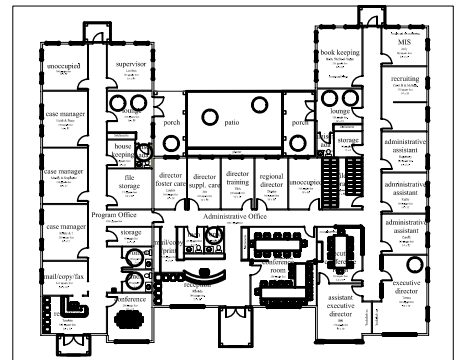
# COMMERCIAL FAMILY CARE FOR CHILDREN & YOUTH

MILTON, PENNSYLVANIA



**PROJECT DATE:** FALL 2004 TO SPRING 2007

**PROJECT DESCRIPTION:** A ONE-STORY BUILDING, SERVING AS A HEADQUARTER AND REGIONAL OFFICE FOR A LOCAL FOSTER CARE ORGANIZATION. INCLUDES A METAL ROOF, CULTURED STONE SIDING, GENEROUS EXTERIOR PORCHES, MODERN ACCESS CONTROL SYSTEMS, AND A GEOTHERMAL SYSTEM.



**ROBERT A. LACK, AIA**  
 Architecture & Design, Inc.  
 230 Market Street, Lewisburg, PA 17837  
 Tele: 570-524-2300 Fax: 570-523-6140  
 www.ralad.com email: ralad@ralad.com